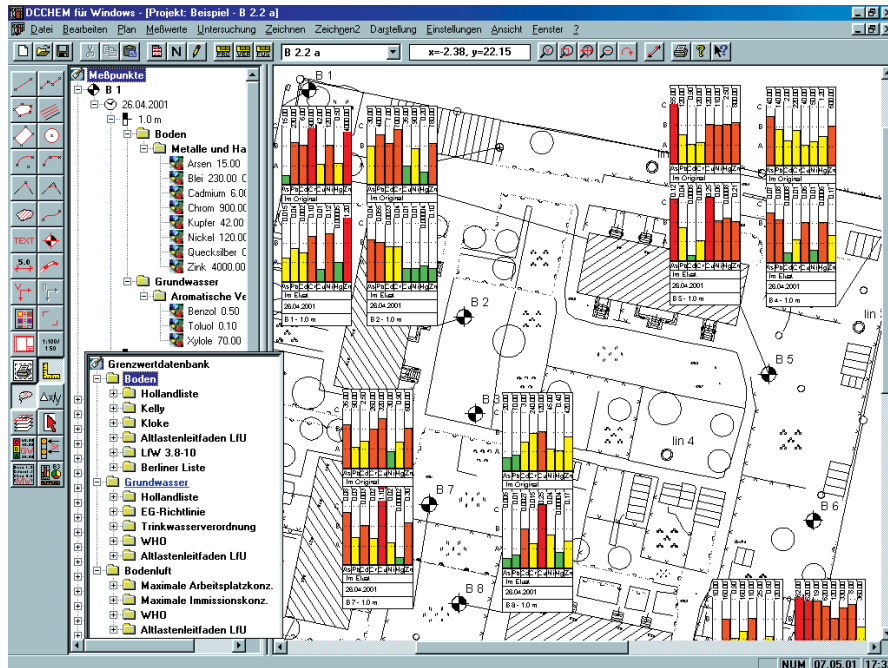


Display of old load survey DCCHEM



Comparison of the
measure values
with the limit
values

Untersuchung von Boden: Metalle und Halbmetalle im Original

| | | ■ | ■ | ■ (LFW) |
|---------------------------|----------|-----------|-----------|---------|
| Arsen (As) in mg/kg | - 10.00 | - 50.00 | > 50.00 | |
| Blei (Pb) in mg/kg | - 100.00 | - 500.00 | > 500.00 | |
| Cadmium (Cd) in mg/kg | - 10.00 | - 50.00 | > 50.00 | |
| Chrom (Cr) in mg/kg | - 50.00 | - 1000.00 | > 1000.00 | |
| Kupfer (Cu) in mg/kg | - 100.00 | - 500.00 | > 500.00 | |
| Nickel (Ni) in mg/kg | - 100.00 | - 500.00 | > 500.00 | |
| Quecksilber (Hg) in mg/kg | - 2.00 | - 10.00 | > 10.00 | |
| Zink (Zn) in mg/kg | - 500.00 | - 2500.00 | > 2500.00 | |

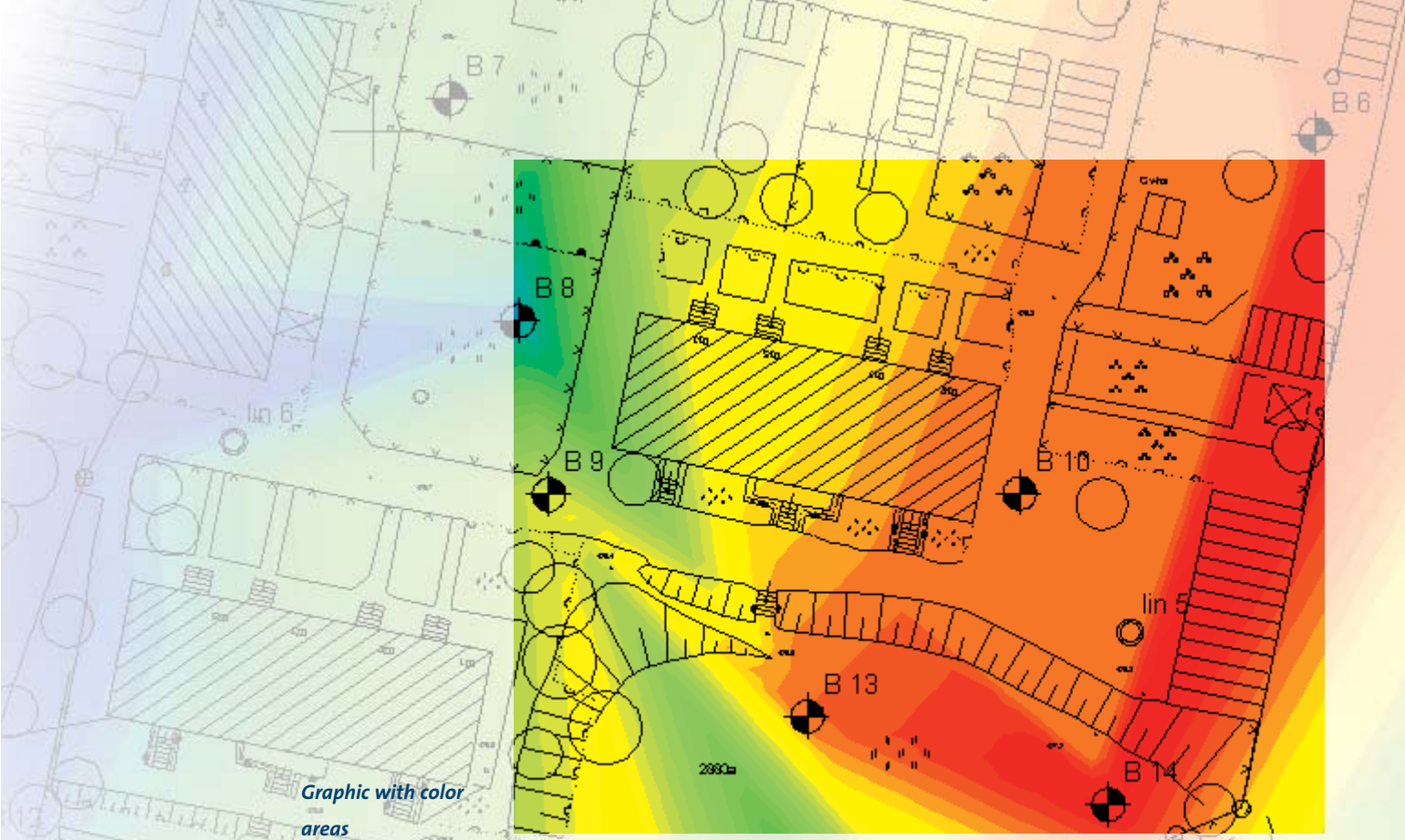
Untersuchung von Boden: Metalle und Halbmetalle im Eluat

| | | ■ | ■ | ■ (LFW) |
|--------------------------|--------|--------|--------|---------|
| Arsen (As) in mg/l | - 0.01 | - 0.04 | > 0.04 | |
| Blei (Pb) in mg/l | - 0.03 | - 0.10 | > 0.10 | |
| Cadmium (Cd) in mg/l | - 0.01 | - 0.02 | > 0.02 | |
| Chrom (Cr) in mg/l | - 0.05 | - 0.20 | > 0.20 | |
| Kupfer (Cu) in mg/l | - 0.05 | - 0.20 | > 0.20 | |
| Nickel (Ni) in mg/l | - 0.05 | - 0.20 | > 0.20 | |
| Quecksilber (Hg) in mg/l | - 0.00 | - 0.00 | > 0.00 | |
| Zink (Zn) in mg/l | - 0.50 | - 2.00 | > 2.00 | |

Grenzwertlisten:
LFW = LFW Bayern Merkblatt 3.8-1

- Editing site maps with import and export of DXF from the CAD
- Support of blocks in DXF
- Complete layer management with switch on/off and freeze
- Inserting images and scanned plans through bitmaps
- Editing with extensive CAD tools: lines, texts, polygons, intersection, symbols, dimension strings
- Optional graphical input with/without grid, snap and ruler tools or with the keyboard
- Limit values database with detailed lists of limit and directing values, freely extendable

Detailed legend

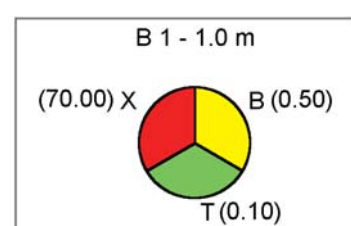


- Input of measure values arranged according to date, point of measuring, depth, types and groups, structured with customizable material lists
- Clear tree structure for all measure results
- Selection in order to display on different plans through different material lists
- Different display options: boxes, circles, beams
- Optional graphic of distributions with elevation lines or color areas
- Automatic legend for all graphics incl. limit values
- Data base storage in Microsoft Access format, interface to MS Excel

- Plan formats from DIN A4 to A0 and customizable formats
- Hardcopy tool for quick output of surveys and excerpts on DIN A4

| | | | | | | | | |
|---|-------------|--------|------|--------|-------|--------|------|---------|
| C | 15.00 | 230.00 | 6.00 | 900.00 | 42.00 | 120.00 | 0.50 | 4000.00 |
| B | | | | | | | | |
| A | | | | | | | | |
| | As | Pb | Cd | Cr | Cu | Ni | Hg | Zn |
| | Im Original | | | | | | | |
| | 26.04.2001 | | | | | | | |
| | B 1 - 1.0 m | | | | | | | |

Different display options



| | As | Pb | Cd | Cr | Cu | Ni | Hg | Zn | |
|--|--------|--------|--------|--------|--------|--------|--------|-------|-------------|
| | Green | Orange | Orange | Red | Yellow | Orange | Yellow | Red | B 1 - 1.0 m |
| | Yellow | Orange | Orange | Red | Green | Orange | Yellow | Red | B 1 - 2.0 m |
| | Red | Orange | Orange | Red | Green | Orange | Yellow | Red | B 1 - 3.0 m |
| | Green | Yellow | Green | Yellow | Green | Yellow | Green | Green | B 1 - 4.0 m |