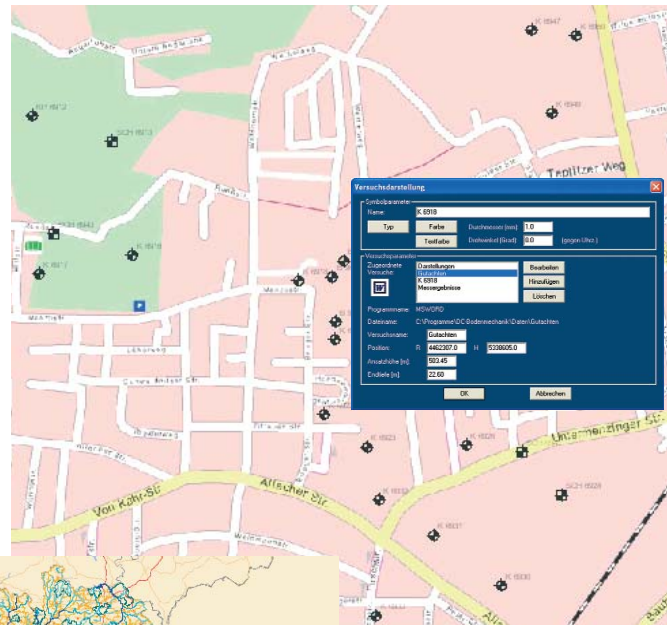
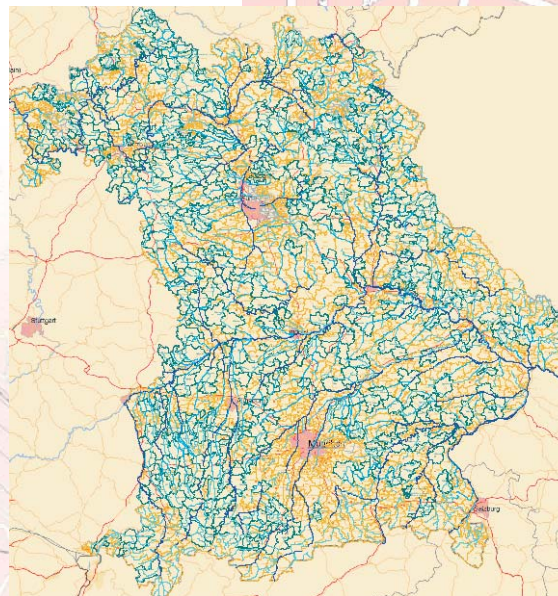


# Administration of bore hole logs in maps DCGIS

- Administration of all bore hole logs and other tests on an overview plan
- Create project maps e.g. as a cut-out with selection of tests
- High-quality maps from Germany map down to city map level, additionally Austria and Switzerland
- Import of maps from land surveying offices, via DXF or of picture files possible
- Insertion of bore hole logs via Gauß-Krueger coordinates or graphical positioning
- Administration of different types of documents (Word, Excel, PDF, photos, ...) at the bore hole positions (document management)
- Standard maps for one federal state included with the program
- High-quality TeleAtlas maps for the complete area of Germany available
- Automatic geo-referencing in Gauß-Krueger or Scout-Cylinder coordinates



Administration of documents



Imported DXF map of Bavaria

- Import of geo-referenced DXF maps (e.g. topological maps)
- Import of any type of maps as picture files (BMP, TIFF, JPEG) and DXF plans with subsequent geo-referencing
- Automatic transfer of all bore hole logs from the program DCBORE
- Optional setting of bore hole logs into the map and transfer of the coordinates to DCBORE
- Recall of available bore hole logs directly from the map by double click
- Supply of map cut-outs to DCBORE for the header sheet of the layer specification: automatic incorporation for all borings with Gauß-Krueger coordinates

